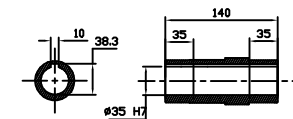


TAP



OUTPUT HOLLOW SHAFT

REDUCER SPEC	
MODEL	B063
SERVICE FACTOR	1.5
RATIO	50.81
OUTPUT [rpm]	39
OUTPUT TORQUE [Nm]	327.2
BACKLASH [arc-m]	20' - 25'
WEIGHT [kg]	21.6
MOTOR SPEC	
MODEL	HG-SR152
POWER [kW]	1.5
INPUT [rpm]	2000
WEIGHT [kg]	7.3

한국체인모터 (주)

Tel. 032-815-8888 Fax. 815-8020
www.hcmfa.com

PROJECT				MOTOVARIO			
DRAWN	SEO Y.S	DATE		REV	A	SCALE	1:1
CHECKED	KIM J.S	DATE		UNIT	MM	PAGE	-
APPROVED	LEE J.Y	DATE					